



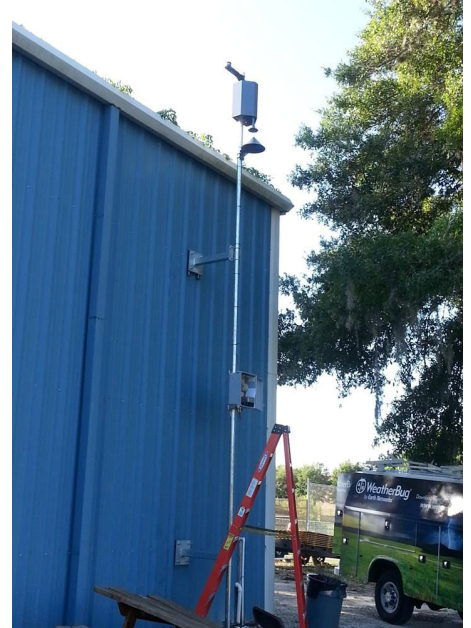
WeatherBug®
by Earth Networks™

Important Notice

CSA Palm Harbor, together with the West Florida Flames and Palm Harbor Little League, have partnered to bring the latest technology in weather forecasting and lightning detection to the Palm Harbor community.

HOW DOES IT WORK?

- The recently installed lighting detectors near the Sunderman, Palm and Putnam fields will sound an alert when dangerous lighting is within 10 miles of the device.
- All activities on the field should stop at that time and all participants should seek shelter.
- When the threat of a lightning strike has passed , usually within 30 minutes, the system will give an all-clear signal and field activities may continue.



WHAT YOU SHOULD KNOW ABOUT OUR WEATHER

- **If you can hear thunder**, you are within 10 miles (16 kilometers) of a storm—and can be struck by lightning.
- **Seek shelter** immediately and avoid situations in which you may be vulnerable.
- **Wait at least 30 minutes after the last clap of thunder before leaving shelter.** The threat of lightning continues for a much longer period than most people realize.
- **Don't be fooled by sunshine or blue sky!**

Your SAFETY is our #1 Priority

Access the world's largest network of real-time weather and climate/lightning sensors used by NASA, The Weather Channel, NOAA, and Little League Baseball and Softball—to name a few. Get the best forecasts , the fastest alerts and the best early warning systems today!

Download the free app for your device now at
www.GetWeatherBug.com



CSA Palm Harbor | Parks & Recreation

1500 16th Street | Palm Harbor, FL 34683

(727) 771.6000 | www.CSAPalmHarbor.org